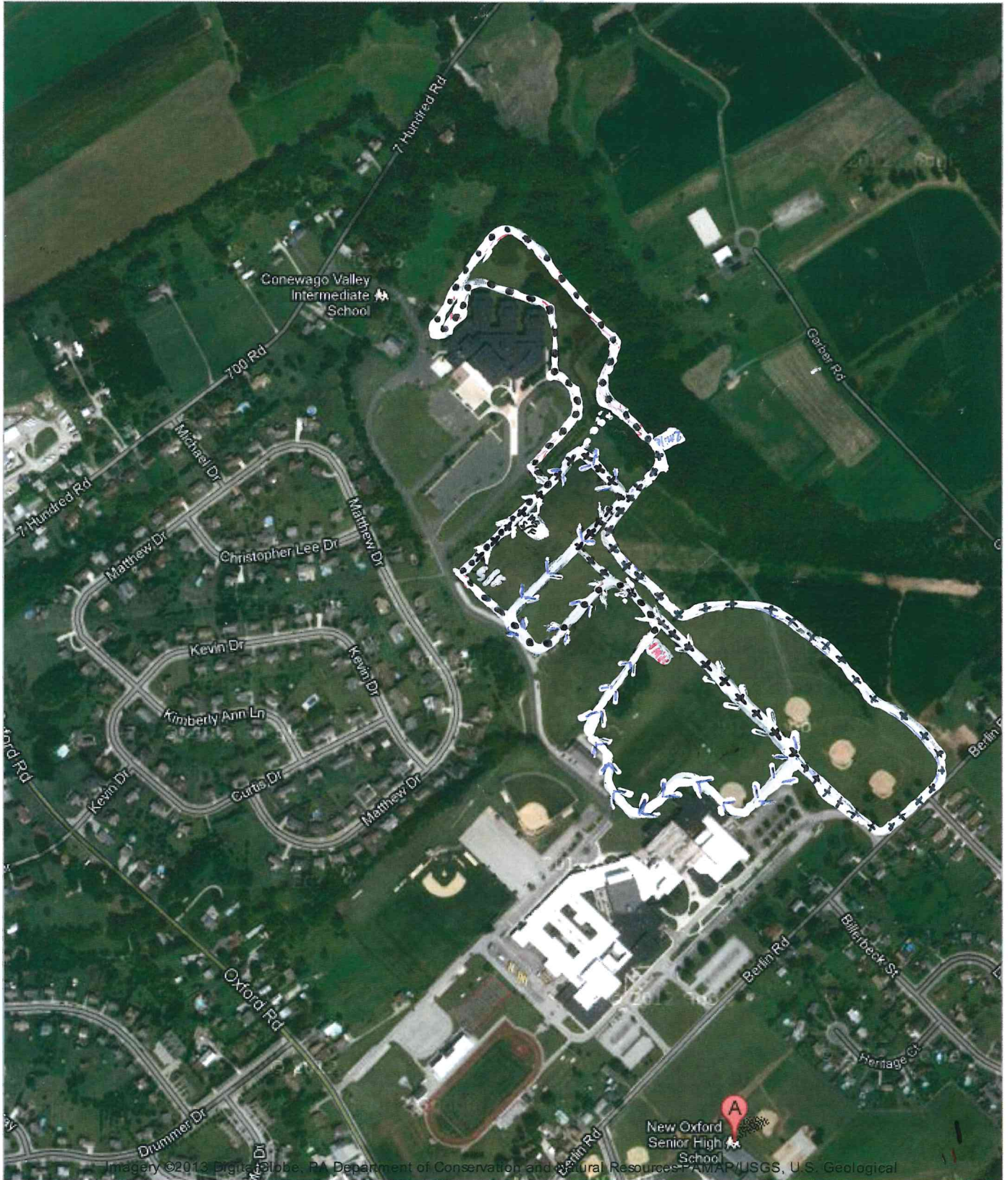


Middle school will do the first and second mile (modified mile and start/finish will be moved up at 2nd mile - exit at ~~white dotted~~ white dotted line)

To see all the details that are visible on the screen, use the "Print" link next to the map.



New Oxford's XC course 3.1  
 1/4 inch spike, 98% grass, start and finish at the same spot, Bathrooms located by soccer field, Buses can park at Practice soccer field.

- ← mile 1
- mile 2
- + mile 3